

## THE RESIDENCE OF THE INTERNATIONAL STUDENTS. LEAGUE OF RED CROSS SOCIETIES.

A useful piece of work, which we have followed with much interest, carried out by the League of Red Cross



THE HALL AND STAIRCASE.

Societies in connection with its Nursing Division is the organisation of International Courses (1) in Public Health Nursing, and (2) for Nurse Administrators and Teachers in Schools of Nursing.

First established in 1921 at King's College for Women, the work was later undertaken by Bedford College, University of London, and since its inception 85 nurses from 37 different countries have been, or are being trained in nursing and Public Health work, the Director of Studies being Mrs. Maynard L. Carter, S.R.N. The students were at first lodged in houses not specially adapted for the purpose, a system which had its drawbacks, especially where students of so many nationalities were assembled. In April, 1924, at the third meeting of the General Council, Dr. Masarykova, President of the Czecho-Slovakia Red Cross, suggested that a permanent international residence be established in London, and we learn from the announcement of the course that other countries, through their Red Cross Societies, have joined her in contributing towards it. The gift of the British Red Cross has been the leasehold for six years and a half of a house at 15, Manchester Square, London, which, it will be remembered, was opened by Princess Arthur of Connaught last June.

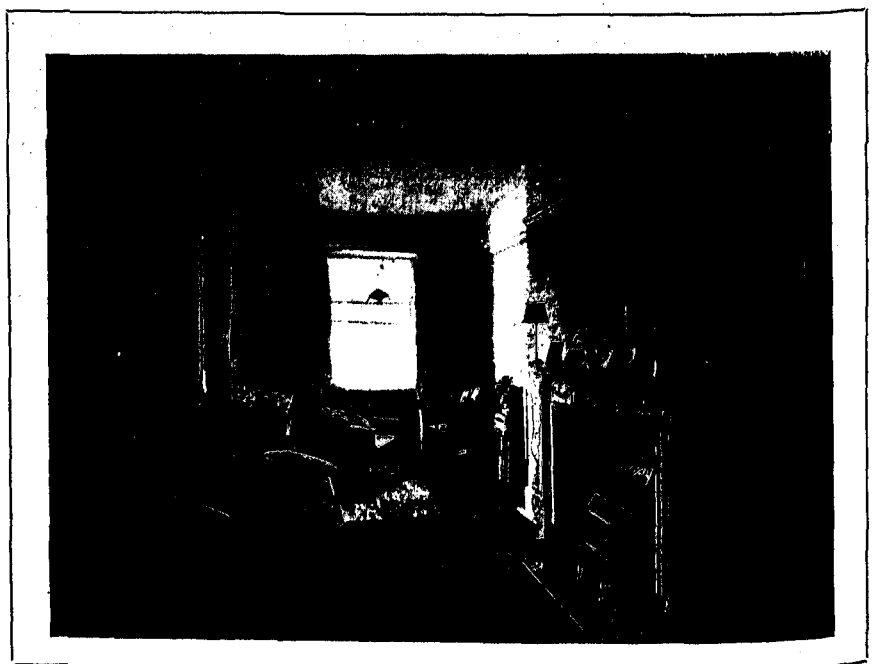
By the courtesy of the League we are able to present the accompanying illustrations of this beautiful house which was built by the brothers Adam in 1773 for the Lord Portman of that day. The beautiful entrance hall, with marble floor

and staircase has a balustrade delicately wrought in iron. The drawing-room, with fine Adams' ceiling, beautifully and harmoniously furnished, overlooks the Square, which in summer time is available for the residents, and should prove a joy and refreshment. Leading out of it through folding doors, is the Library where silence is observed, and

the students can work under the best conditions. One very interesting feature of the house is that a number of Red Cross Societies have not only undertaken to bear the expense of furnishing a students' room, but are sending furnishings such as rugs, draperies, curtains, cushions, embroideries, glass, china, and pictures, distinctive of the countries. Greece, Finland, Sweden, Latvia, China, and other nationalities are sending such gifts, the Greek room is already arranged, and very beautiful it is, with a divan bed with oriental covering and cushions and soft silken curtains. One can imagine the joy of a stranger in a strange land coming into an atmosphere not only beautiful in itself, but so reminiscent of home. As time goes on the house will, no doubt, become more and more a storehouse of lovely things from all lands.

The dining room which is arranged with small tables seating four students is a charming room. We particularly noticed the flat embroidered linen cases which are used instead of rings for the table-napkins, a cleanly and decorative plan.

It may be wondered how it is possible for students to come from so many far-off countries to share the advantages of this Course. The solution is that each National Red Cross Society belonging to the League has been asked to provide, if possible, one or more scholarships of £200 in addition to travelling expenses, to enable a nurse from its own country to take the International Course in Public Health Nursing, and the Course for



A STUDENT'S ROOM.

[previous page](#)

[next page](#)